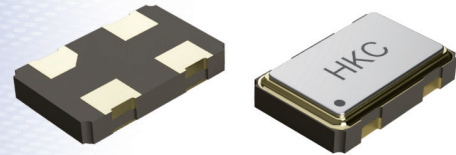




5032 Crystal Clock Oscillator 5032XO Series

Model C2

4 PADS 5.0 x 3.2



Frequency Range : 0.625MHz to 160.00MHz / 32.768KHz

Features :

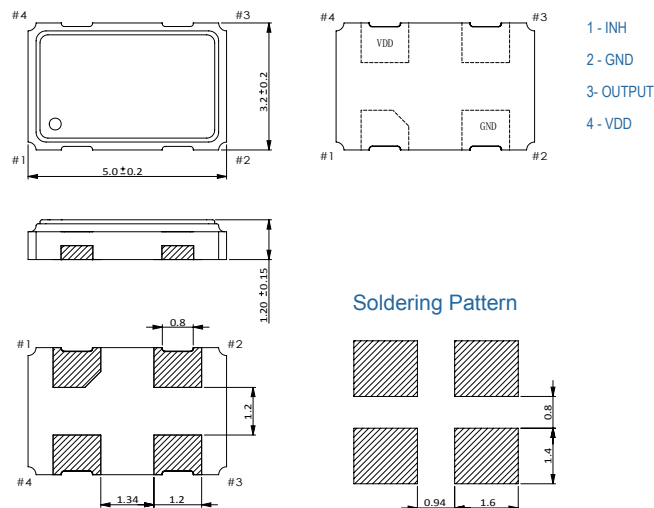
- High reliability & low cost unit
- Tight stability & extended temperature available
- Lead-free type
- For automotive applications, please contact our sales representatives

QUARTZ
CRYSTALS

Standard Specifications

Item	Value																				
Frequency Range	0.625MHz to 160.00MHz / 32.768KHz																				
Frequency Stability	±50ppm (or specify)																				
Operating Temperature Range	-20°C to +70°C (or specify)																				
Operable Temperature Range	-40°C to +85°C																				
Operating Voltage	1.8V / 3.3V / 5.0V ±10%																				
Output Type	HCMOS																				
Output Load	15pF Max.																				
Current Consumption (Max)	<table border="1"> <thead> <tr> <th></th> <th>1.8V:</th> <th>3.3V</th> <th>5.0V</th> </tr> </thead> <tbody> <tr> <td>0.625-16MHz:</td> <td>6mA</td> <td>0.625-16MHz: 8mA</td> <td>0.625-16MHz: 23mA</td> </tr> <tr> <td>17-80MHz:</td> <td>15mA</td> <td>17-80MHz: 38mA</td> <td>17-80MHz: 35mA</td> </tr> <tr> <td>81-160MHz:</td> <td>37mA</td> <td>81-160MHz: 65mA</td> <td>81-160MHz: 55mA</td> </tr> <tr> <td>32.768KHz:</td> <td>0.2mA</td> <td>32.768KHz: 0.2mA</td> <td></td> </tr> </tbody> </table>		1.8V:	3.3V	5.0V	0.625-16MHz:	6mA	0.625-16MHz: 8mA	0.625-16MHz: 23mA	17-80MHz:	15mA	17-80MHz: 38mA	17-80MHz: 35mA	81-160MHz:	37mA	81-160MHz: 65mA	81-160MHz: 55mA	32.768KHz:	0.2mA	32.768KHz: 0.2mA	
	1.8V:	3.3V	5.0V																		
0.625-16MHz:	6mA	0.625-16MHz: 8mA	0.625-16MHz: 23mA																		
17-80MHz:	15mA	17-80MHz: 38mA	17-80MHz: 35mA																		
81-160MHz:	37mA	81-160MHz: 65mA	81-160MHz: 55mA																		
32.768KHz:	0.2mA	32.768KHz: 0.2mA																			
Output Symmetry	HCMOS: 40~60%(at 50%V _{DD}) ; 45~55% is available																				
"High" Output Voltage	HCMOS: 90%V _{DD} Min.																				
"Low" Output Voltage	HCMOS: 10%V _{DD} Max.																				
Rise and Fall Time	0.625-160MHz: 5ns Max. 32.768KHz: 30ns Max.																				
Tri-State	Yes																				

Dimension



Note :

1. Manufacturer reserves the right to change the specification and content of this product for improvement without notification.
2. Custom specification is welcome. Please contact our sales representative for further details.
3. If the crystal is intended for applications which have direct impact on human life and properties, and require a high degree of reliability and safety concerns, customers must provide full information such as but not limit to the application, electrical and reliability specification at the inquiry beginning stage.
4. Customers have to agree to the "Guideline for handling crystal units" and "Standard Terms and Condition of Sales" which is printed in this catalog before placing orders to our company or our distributors. There are also unpredictable factors such as applied condition, oscillation margin and etc and customers must check them beforehand. In case of queries, please do not fail to send inquiry to our company before ordering.

Ver 1.2

